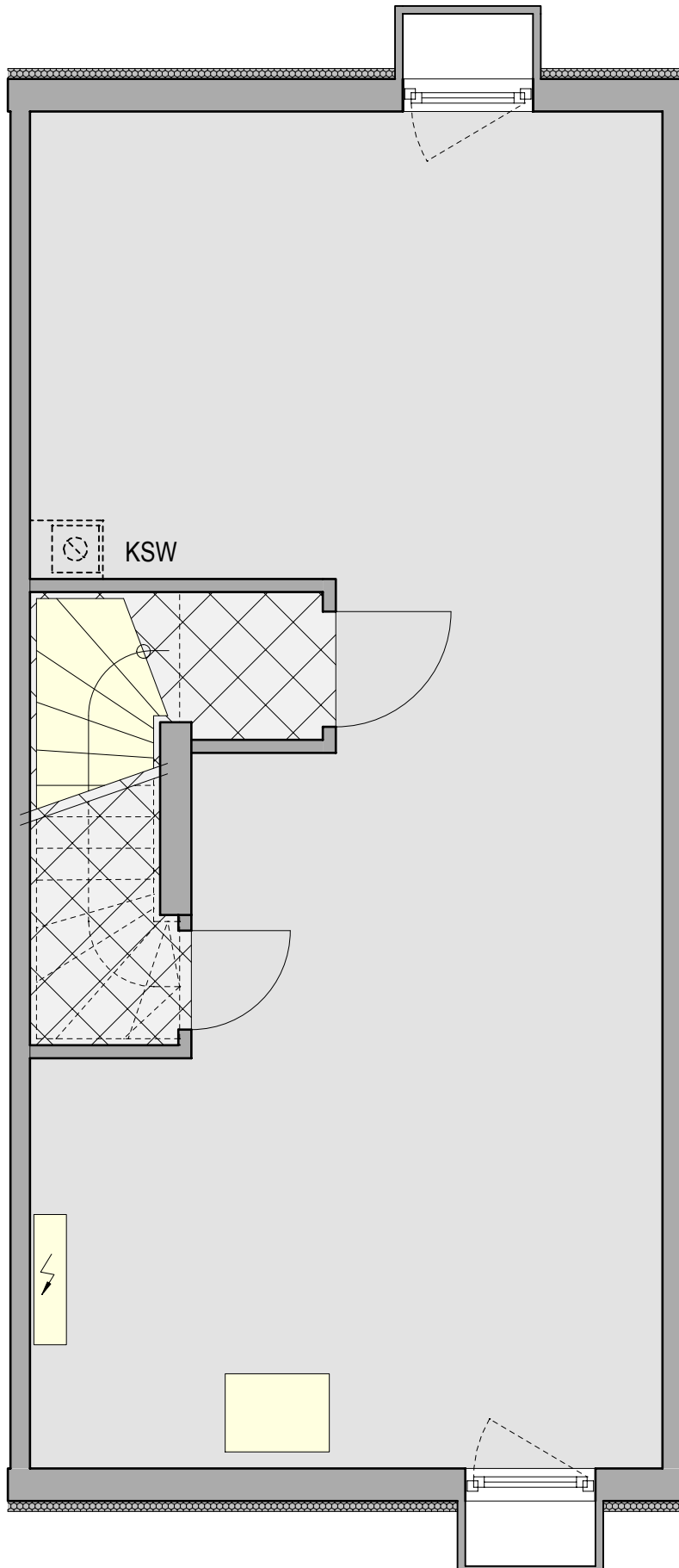


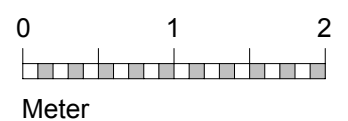
Feldkirchen  
Eschenweg

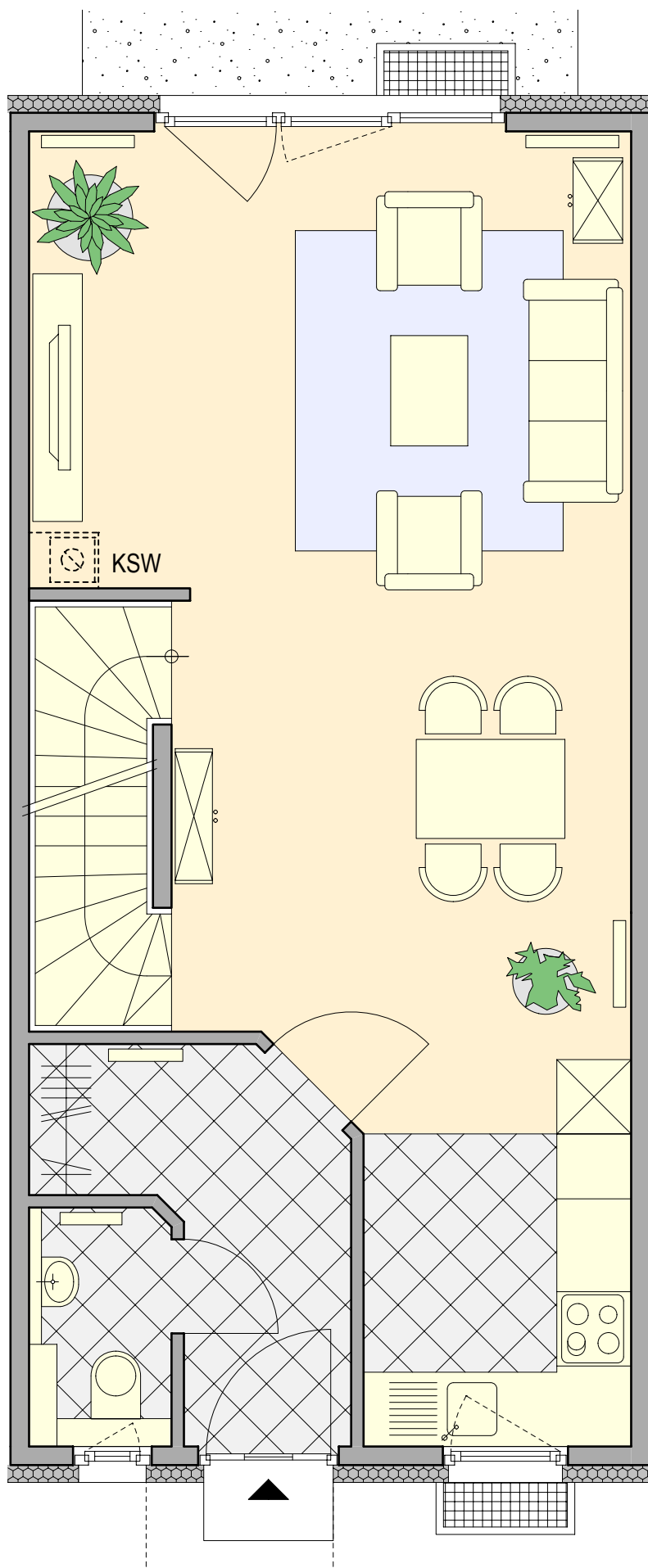
Reihenmittelhaus  
Treppe links



### Kellergeschoss

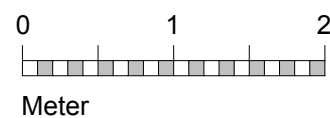
Raum	Nutzfläche
Trp.-Vorraum	1,50 m <sup>2</sup>
Keller	44,60 m <sup>2</sup>
Abstell	1,51 m <sup>2</sup>
	<b>47,61 m<sup>2</sup></b>

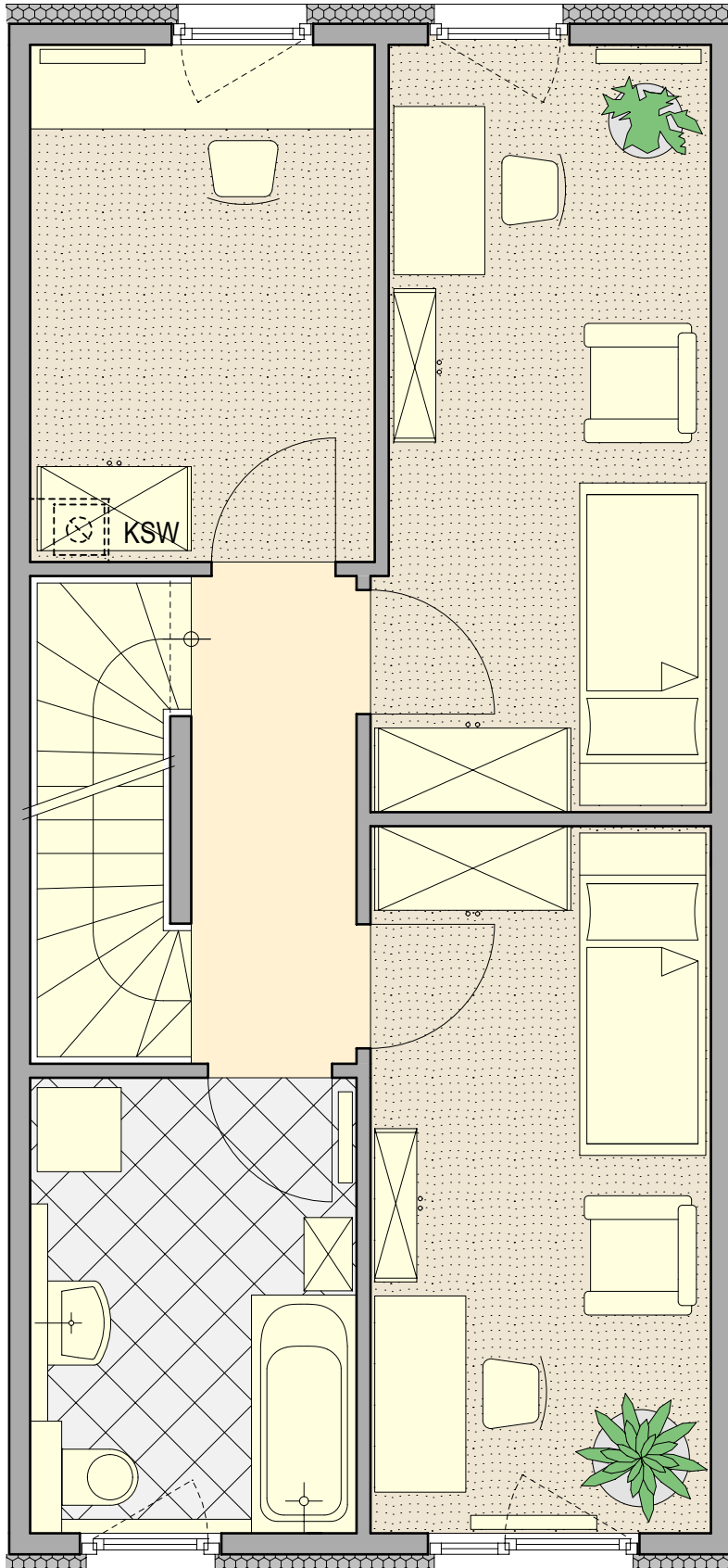




Erdgeschoss

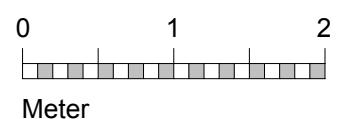
Raum	Wohnfläche
Windfang	5,62 m <sup>2</sup>
WC	2,00 m <sup>2</sup>
Küche	7,52 m <sup>2</sup>
Ess./Wohnen	30,95 m <sup>2</sup>
Terrasse (1/4)	3,00 m <sup>2</sup>
	<b>49,09 m<sup>2</sup></b>

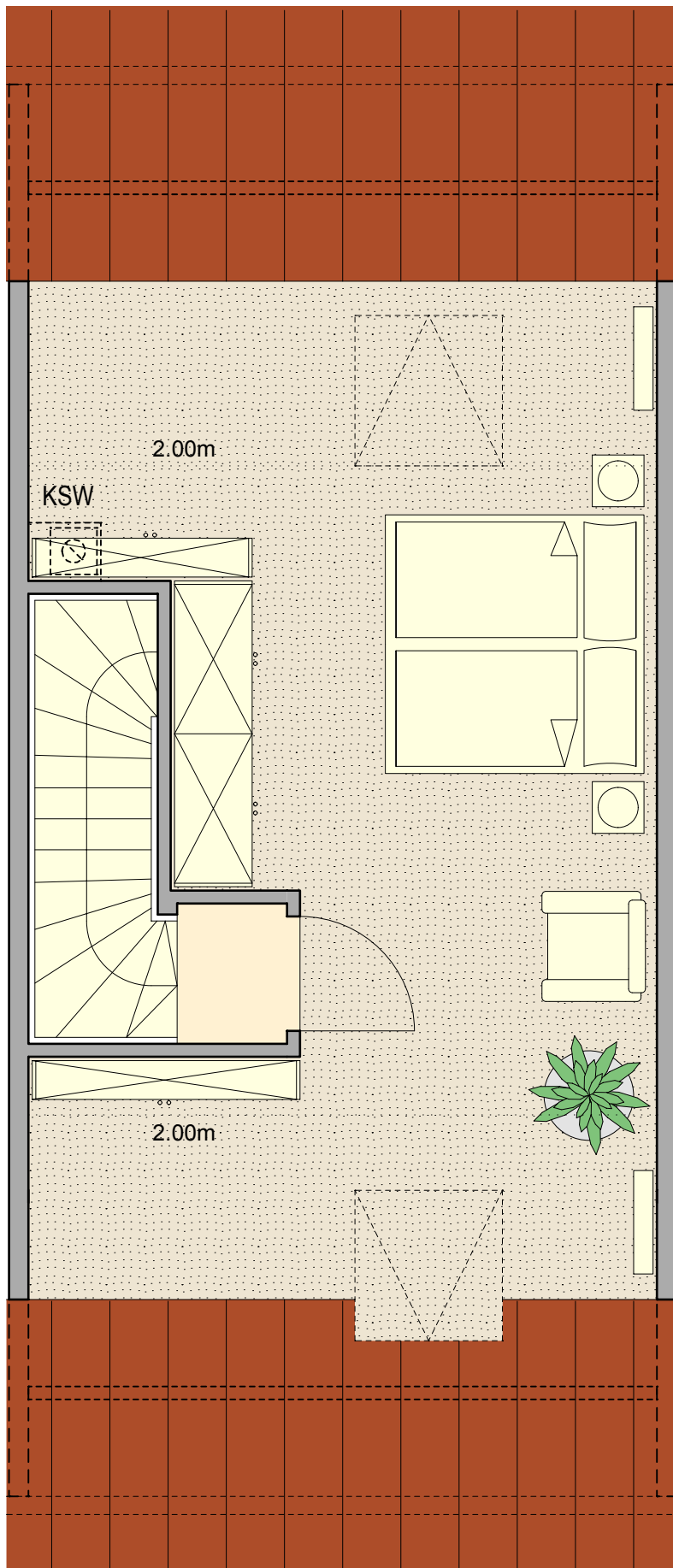




Obergeschoss

Raum	Wohnfläche
Bad	7,35 m <sup>2</sup>
Kind 1	12,18 m <sup>2</sup>
Kind 2	12,73 m <sup>2</sup>
Flur	4,02 m <sup>2</sup>
Hauswirtschaft	9,02 m <sup>2</sup>
	<b>45,31 m<sup>2</sup></b>





Dachgeschoss

Raum	Wohnfläche
Vorraum	0,92 m <sup>2</sup>
Eltern	25,92 m <sup>2</sup>
	<b>26,84 m<sup>2</sup></b>

Eltern (Netto-Grundfläche) (ca. 38,00 m<sup>2</sup>)

